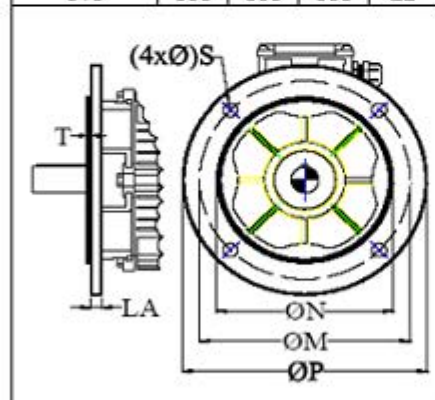
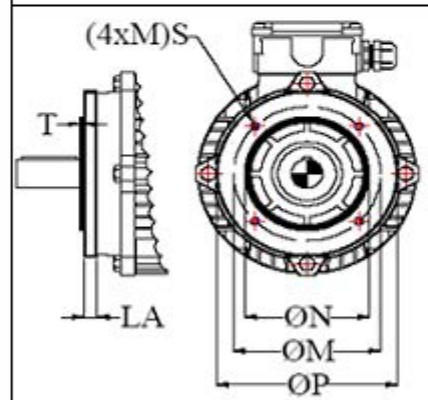


Flensafmetingen + as maten elektromotoren

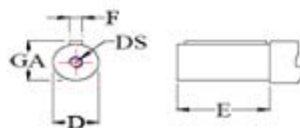
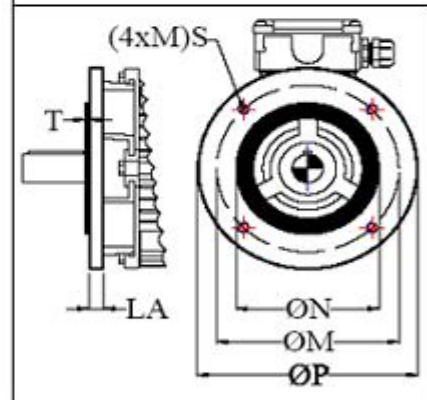
B5 flens				
IEC	P	M	N	S
56	120	100	80	6,6
63	140	115	95	10
71	160	130	110	9
80	200	165	130	11
90	200	165	130	11
100	250	215	180	14
112	250	215	180	14
132	300	265	230	14
132 klein	250	215	180	15
160	350	300	250	18
160 klein	300	265	230	15
180	350	300	250	18
200	400	350	300	18
225	450	400	350	18
250	550	500	450	18
280	550	500	450	18
315	660	600	550	22



B14a flens				
IEC	P	M	N	S
56	80	65	50	M5
63	90	75	60	M5
71	105	85	70	M6
80	120	100	80	M6
90	140	115	95	M8
100	160	130	110	M8
112	160	130	110	M8
132	200	165	130	M10



B14b flens				
IEC	P	M	N	S
56	105	85	70	M6
63	120	100	80	M6
71	140	115	95	M8
80	160	130	110	M8
90	160	130	110	M8
100	200	165	130	M10
112	200	165	130	M10
132	250	215	180	M10



IEC	71	80	90	100	112	132	160	180	200	225	225	250	250	280	280	315	315
E (mm)	30	40	50	60	60	80	110	110	110	110	140	140	140	140	140	140	170
D (mm)	14	19	24	28	28	38	42	48	55	55	60	60	65	65	75	65	80
DS	M5	M6	M8	M10	M10	M12	M16	M16	M20	M20	M20	M20	M20	M20	M20	M20	M20
F (mm)	5	6	8	8	8	10	12	14	16	16	16	18	18	18	20	18	22